



Black Hills Health & Education Center

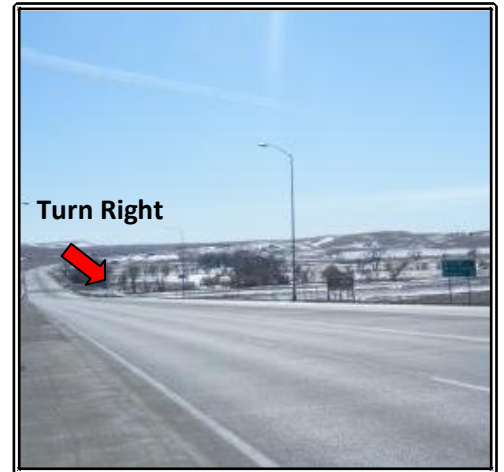
P.O. Box 19, Hermosa, South Dakota, 57744 • (800) 658 5433 • www.bhhec.org

Directions to the BHHEC

By Air: Three airlines (Northwest, Delta, United) fly to Rapid City. The airport is 25 miles from BHHEC. We will be happy to meet you there and provide transportation to the center.

By Car from the East or West:

1. Go to Rapid City on I-90; take exit 60 and follow North Street as it curves to the south west.
2. Take a left at the stop light onto Campbell Street and head south.
3. Campbell becomes highway 79.
4. Stay on highway 79 going south for 15 miles.
5. In the small town of Hermosa, you will come to 'The Flying J' on the right.
6. Turn right onto Highway 40, the next road on the right, towards Keystone.
7. Follow the directions "From Highway 40."



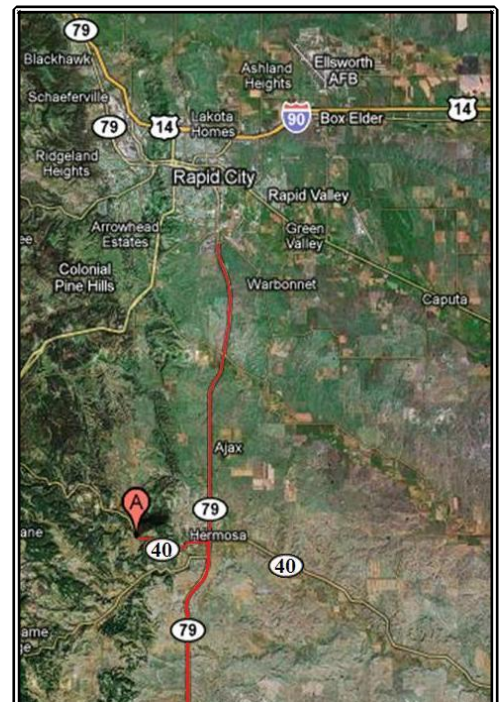
The Highway 40 turn off to the right when travelling south from Rapid City.

By Car from South:

1. Come north on Highway 79.
2. Approximately 30 miles north of Hot Springs Junction is the little town of Hermosa.
3. Just before 'The Flying J' turn left onto Highway 40, towards Keystone.
4. Follow the directions "From Highway 40."

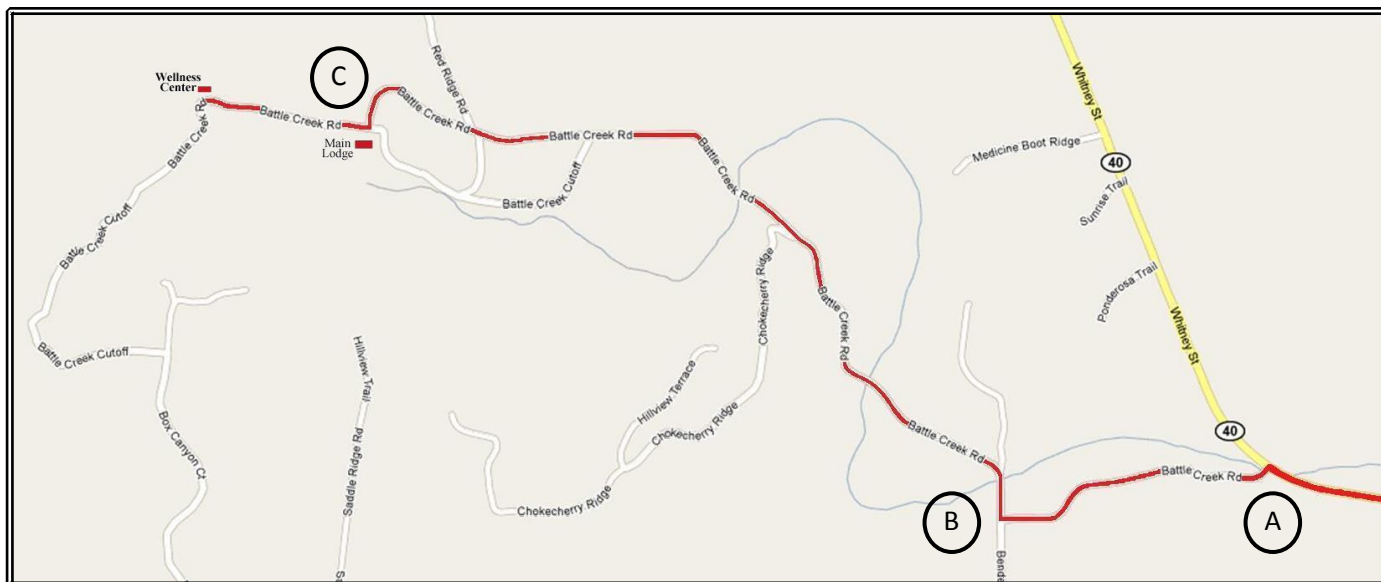


The Highway 40 turn off to the left when travelling north towards Rapid City.



Map showing Highway 79 and Highway 40 turn off.

From Highway 40:



1. Go four (4) miles along Highway 40. Turn left onto Battle Creek Road (gravel road). You will see our blue sign: 'Black Hills Health and Education Center' on the right just before the turn. Refer to Picture A.
2. At the "T" at the base of the hill turn right, this is still Battle Creek Rd, even though the sign seems to be pointing the other way. Refer to Picture B.
3. Stay on the main road until you reach the Main Lodge a little less than three miles from Highway 40.
4. If you are coming as a Wellness Guest turn right and head up the Hill to the Wellness Center. Refer to Picture C.
5. If you are coming for any other reason, go straight through the car-park to the Main Lodge. Refer to Picture C.